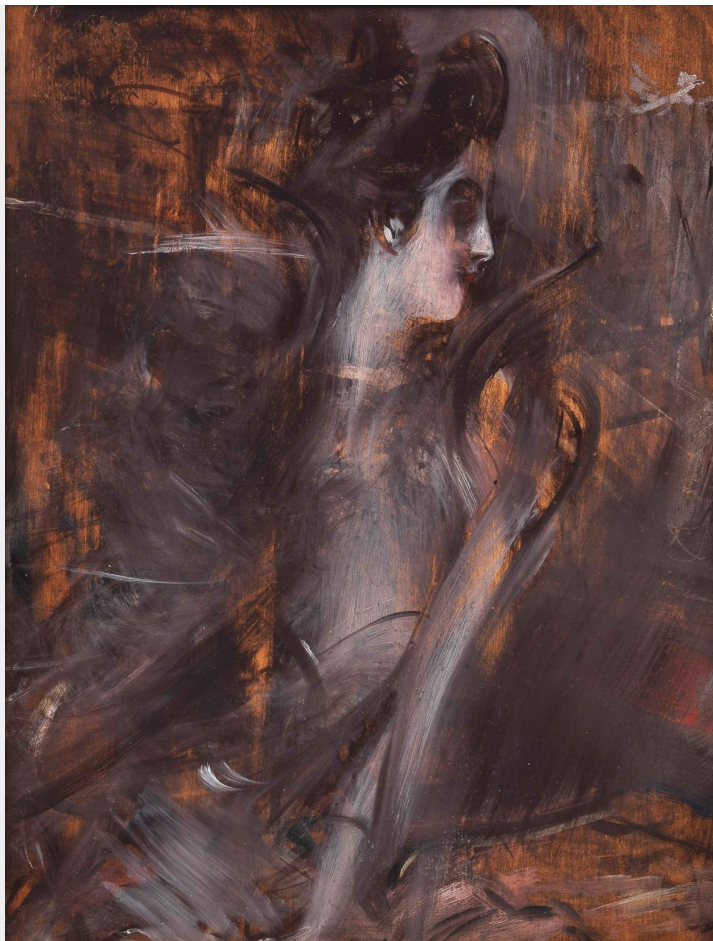


STUDY FOR PORTRAIT OF A LADY



Giovanni Boldini

(Ferrara 1842 - Parigi 1931)

Misure: cm 35 x 26,5

Tecnica: Oil on panel

Originally found on the verso of the painting *Interior of the atelier with the portrait of little Subercaseaux*;

inventoried by Emilia Cardona with number 36B bis of Atelier Boldini.

Bibliography: *Boldini. Catalogo ragionato*, edited by P. Dini, F. Dini, Turin 2004, no. 741, p. 401



BERARDI

GALLERIA D'ARTE | ROMA

www.berardiarte.it



Associazione Antiquari
d'Italia